

COMMUNITY RESOURCE GUIDE 2012-2013

Lewis County, Washington

LEWIS COUNTY
WORK OPPORTUNITIES

Helping People  Help Themselves



Table of Contents

Addiction.....	3	Housing & Homeless	26
Advocacy	4	Hospitals.....	28
Apartments	4	Hotlines.....	28
Child / Respite Care	8	Legal Services	29
Children’s Services.....	8	Libraries.....	30
Clothing Banks	10	Medical Services	30
Community Support.....	10	Mental Health	32
Dental Programs.....	12	Movies	32
Developmental Disabilities	12	Pediatricians.....	33
Domestic Violence.....	15	Police Depts / Sheriff /	
Education.....	16	State Patrol.....	33
Emergency	18	Pregnancy Tests	34
Employment Services.....	18	Recreation	34
Family Support Services.....	19	Senior / Adult Services	35
Fire Depts.....	20	Transportation	37
Food Programs.....	21	Utilities	37
Government Agencies	22	Youth Services.....	38

The *Community Resource Guide* was developed by Lewis County Work Opportunities to provide information for adults with physical, mental, and social disabilities and was printed with funding received by the Lewis County Public Health & Social Services Developmental Disabilities Program. It is our hope that this guide will also provide essential reference information to low-income individuals and families in the community.

June 2012

Designed and Compiled by Paula Dana
 Photo: Tulip fields at DeGeode’s Bulb Farm, Mossyrock, WA
 (c) 2012 Lewis County Work Opportunities

Lewis County Work Opportunities

Greg Martin, Executive Director
 122 Sears Rd, Chehalis, WA 98532
 360.748.9921 (voice); 360.748.9922 (fax)
 www.lcworkop.org

ADDICTION

Al-Anon / Alateen
 www.al-anon.alateen.org
 757.563.1600
Support for families of problem drinkers.

Alcoholics Anonymous (AA)
 www.aa.org
 360.807.0902
AA is a fellowship of men and women who share their experience, strength and hope with each other that they may solve their common problem and help others to recover from alcoholism.

Alcohol/Drug 24-Hour Helpline
 800.562.1240 (WA State)
 206.722.3700
 206.722.3724 (TTY)

Balanced Perspectives Counseling
 BalancedPerspectives.org (web)
 855.426.2530
Alcohol/drug and mental health assessments and counseling. Free help for gamblers and family members.

Eugenia Center
 121 NW Chehalis Ave, Chehalis 98532
 360.740.9767
Individual and family counseling, interventions, substance abuse meetings.

Inter Peace Counseling
 118 N. Market St, Chehalis 98532
 360.748.7268
 360.740.9787 (fax)
Alcohol/drug counseling, Alcohol Drug Info School (ADIS).

Narcotics Anonymous (NA)
 www.na.org
 818.773.9999
 818.700.0700 (fax)
Fellowship of men and women for whom drugs had become a major problem.

New Directions Counseling
 1956 Kresky Rd, Chehalis 98532
 360.740.4380
 360.740.1877 (fax)
 506 W. Franklin, Shelton
 360.427.5232
Chemical dependency counseling, group or individual counseling, deferred prosecution assistance. Payment plans available and accepts most insurance.

Overeaters Anonymous (OA)
 www.oa.org
 505.891.2664
OA offers a 12-step program of recovery from compulsive eating.

Providence Centralia Hospital Addictions Recovery Center
 1800 Cooks Hill Rd #G, Centralia 98531
 360.827.8200

Substance Abuse
 800.662.HELP

12-Step Club of Lewis County
 Located at Yardbirds Mall
 2100 N. National Ave, Chehalis 98532
 360.748.6818



ADVOCACY

ARC of Washington State

2638 State Ave, Olympia 98506

www.arcwa.org (web)

info@arcwa.org (email)

360.357.5596

360.357.3279 (fax)

888.754.8798 (toll free)

800.562.6000 (legislative hotline)

Advocates for the rights of people with developmental disabilities.

Columbia Legal Services

www.columbialegal.org

206.464.1122

800.542-0794 (toll free)

Help with non-criminal legal issues

Crime Victims Advocacy / Human Response Network

125 NW Chehalis Ave, Chehalis 98532

www.hrnlc.org

360.748.6601

866.711.2826 (toll free)

Helps all victims of sexual assault, domestic violence, and victims of crime.

Disability Rights of Washington (DRW)

315 Fifth Ave S #850, Seattle 98104

www.disabilityrightswa.org

206.324.1521 (local)

800.562.2702 (toll free)

800.905.0209 (TTY)

Division of Child Support Enforcement (DCS), WA

6135 Martin Way E, Lacey 98516

Mailing: PO Box 11520, Tacoma 98411

360.664.6900 (local)

800.345.9964 (toll free)

866.668.4389 (fax)

360.438.8520 (TDD)

Parents are Vital in Education (PAVE) in Washington

6316 S 12th St, Tacoma 98465

www.wapave.org (web)

pave@wapave.org (email)

253.565.2266 (voice/TTY)

253.566.8052 (fax)

800.572.7368 (toll free)

- Family to Family Information Center
- Parent Training & Information Center
- Response to Intervention (RTI)
- Specialized Training of Military Parents (STOMP)

APARTMENTS

www.aptfinder.org



Allegre Villa Apartments

207 E Walnut St, Winlock 98596

360.785.4521

Housing for seniors 62+ or disabled any age. Residents pay 30% of income for rent. Units are 567 sq ft for 1 bdrm and 693 sq ft for 2 bdrm. Cambridge Apts are managed by the same company.

Angel Apartments

702 N Tower Ave, Centralia 98531

360.330.1424

Lewis County shelter program, low income housing.

Apartment Circuit

3626 Harrison Ave, Centralia 98531

360.736.5371

Brindlewood Apartments

1401 Johnson Rd, Centralia 98531

brindlewoodapartments@gmail.com

360.736.2388

360.736.0468 (fax)

Individual and/or family. Low-income housing complex with 68 units offering HUD project-based Section 8. Residents pay 30% of income for rent. Water, sewer, and garbage are included. Rent credit allowed for tenant paid electric utility.

Brotherson Rd Apartments

1104 Brotherson Rd, Centralia 98531

360.736.3047

Cambridge Apartments

1429 Johnson Rd, Centralia 98531

cambapts@click.com

360.736.5463

360.736.3432 (fax)

Housing for seniors 62+ or disabled any age. USDA Rural Housing Rental Assistance subsidy for 24 out of 38 units. Residents pay 30% of income for rent. Allegre Villa Apts are managed by the same company.

Candlewood Senior Apartments

1322 Harrison Ave, Centralia 98531

candlewood@legacymgtteam.com

360.736.5037

360.736.9842 (fax)

Housing for seniors 62+ or disabled any age. USDA Rental Assistance subsidy for 18 out of 40 units. Residents pay 30% of income for rent. Non-subsidized units are also income based but there is a base rent required. Housing Authority Section 8 vouchers are accepted in our non-subsidized units.

Centralia Manor Apartments

303 W Pine St, Centralia 98531

centraliamanor@questoffice.net

360.736.8185

Senior housing for 62+ or disabled. All units subsidized through the HUD project-based Section 8 program. Residents pay 30% of adjusted monthly household income.

Centralian Apartments

1405 Lewis St #15, Centralia 98531

360.736.5267

Section 8 floating voucher required.

Chehalis Avenue Apartments

366 SW 3rd St, Chehalis 98532

360.748.9774

Chehalis Manor

300 Market Blvd, Chehalis 98532

360.748.6261

Senior housing for 62+ or disabled any age.

Cooks Hill Manor

2010 Cooks Hill Rd, Centralia 98531

www.cookshillmanor.com

360.330.2010

Seniors 65+, not low income.

Corridor Apartments

2802 Russell Rd, Centralia 98531

russellroad@questoffice.net

360.807.1900

360.807.1905 (fax)

Individual and/or family. Section 42 tax credit LIHTC housing program. Also accepts housing authority provided Section 8 vouchers. Dishwasher and washer/dryer hook-ups. Note: Managed by same company as Russell Road Apartments.

APARTMENTS

(continued)

Harrison Village Apartments

1402 Harrison Ave, Centralia 98531
harrison.village@ad-west.com
360.736.3117
360.807.6283 (fax)

No direct subsidy but offers affordable rent through WA State housing tax credit program. Gladly accept housing authority provided Section 8 vouchers.

Hillview Apartments

600 N Iron St, Centralia 98531
360.736.5463

Hillview Terrace Apartments

522 N Iron St, Centralia 98531
360.807.6700

Lacosta Apartments

Centralia 98531
360.736.0558
Housing for agriculture workers only.

Lewis & Clark Property Apartments

117 W Magnolia St, Centralia 98531
360.736.5358 (voice/fax)
Senior housing for 55+ or disabled any age. No wheelchair access.

Morton Senior Center

103 Westlake Ave, Morton 98356
360.496.3230
Senior housing for 62+ or disabled 18+.

Park Center Apartments

3007 Borst Ave, Centralia 98531
www.primelocation.com
360.807.1234
360.736.4499

Park Place Apartments

105 Haywire Rd, Napavine
parkplaceapts@cablespeed.com
360.262.3972 (voice/fax)
Individual and/or family. USDA rental assistance program. Residents pay 30% of income.

Providence Blanchet House Providence Rossi House

1700 Providence Ln, Centralia 98531
laurie.sheppard@providence.org
360.330.8748
360.330.8795 (fax)
Senior 62+ HUD PRAC program.
Residents pay 30% of income.

Russell Road Apts I and II

2802 Russell Rd, Centralia 98531
russellroad@qwestoffice.net
360.807.1900
360.807.1905 (fax)
Individual and/or family. Section 42 tax credit LIHTC housing program. Also accepts housing authority provided Section 8 vouchers. Note: Managed by same company as Corridor Apartments.

St. Helens Apartments

440 N Market Blvd, Chehalis 98532
360.748.6243

St. Johns Court

421 Centralia College Blvd, Centralia
greenfieldmag@comcast.net
360.748.0750
360.345.1080 (fax)
Senior housing for 62+ or disabled any age.

Shannon Village Apartments

2227 Harrison Ave, Centralia 98531
360.736.3950
Managed through TJ Guyer.

Southcreek Apartments I

1101 Scammon Creek Rd,
Centralia 98531

Southcreek Apartments II

1103 Scammon Creek Rd,
Centralia 98531

Southcreek Apartments III

1025 SW 20th St, Chehalis 98532
www.southcreekapts.com
southcreekmgr@qwestoffice.net
360.330.1836
360.330.1856 (fax)
Individual and/or family. Section 42 tax credit LIHTC housing program. Also accepts housing authority provided Section 8 vouchers. Water, sewer, and garbage included. Washer/dryer hookups with appliances for lease in some units.

TAJ Brumfield

117 W Magnolia St, Centralia 98531
360.219.7847

Tilton River Court Apartments

302 First St, Morton 98356
tiltonriver@gres.com
360.496.1971
360.707.7191 (fax)
Senior housing 62+ or disabled 18+.

Project-based subsidy through HUD Section 8 program. Residents pay 30% of their income.

Vintage Apartments

1590 N National Ave, Chehalis 98532
vintagechehalis@spispg.com
360.740.1029
360.740.1087 (fax)
Housing for seniors 55+ with disabilities.

Virginia Station Apartments

111 Virginia Dr, Centralia 98531
guardianmanagementllc.com
360.736.7864
360.736.7869 (fax)
Individual and/or family. USDA rental assistance program on 33 out of 35 units where residents pay 30% of income. Some non-subsidized units. Also accepts housing authority provided Section 8 vouchers for non-subsidized units.

Woodland Estates Retirement Center

2100 SW Woodland Circle, Chehalis 98532
360.748.0095
360.740.0760 (fax)
Housing for seniors 55+.



CHILD/RESPITE CARE

Catholic Community Services (CCS)

1570 Bishop Rd, Chehalis 98532

www.ccsww.org

360.345.1100

800.642.8021 (toll free)

Long-term care and help for adults, children, and seniors with developmental disabilities to stay in own homes.

Child Care Action Council

PO Box 446, Olympia 98507

www.ccacwa.org

360.786.8907

360.786.8960 (fax)

Children's Lab School, Centralia College

600 Centralia College Blvd, Centralia 98531

www.centralia.edu

360.736.9391 x462

Ages 4 weeks to 6 years, non-income based.

Dept of Early Learning (DEL)

6860 Capital Blvd, Olympia

PO Box 40972, Tumwater 98504

www.del.wa.gov

877.487.4866

800.451.9994 x4312

(Aberdeen)

Child care licensing for WA.



Pope's Kids Place

230 Washington Way, Centralia 98531

www.popeskidsplace.org (web)

info@popeskidsplace.org (email)

360.736.9178 (office)

360.736.9181 (fax)

360.736.9147 (clinic)

360.330.8258 (24-hr emergency)

CHILDREN'S SERVICES

Big Brothers Big Sisters of Lewis County

1126 S Gold St #229, Centralia 98531

www.swwabigs.org

360.807.4097

Child & Family Studies Dept, Centralia College

600 Centralia College Blvd, Centralia 98531

www.centralia.edu

360.736.9391 x298 or x465

Oversees all child care at Centralia College. Parenting classes available.

Children with Special Needs, Lewis County

www.cshcn.org

360.740.1489

360.740.1222

Child Find

800.426.5678

Dept for the Blind, WA

3411 S Alaska St, Seattle 98118

www.dsb.wa.gov

206.906.5500

800.552.7103 (toll free)

Assist people with vision loss. Offices in Olympia, Tacoma, Vancouver, and Spokane.

Division of Children and Family Services (DCS), WA

3401 Galvin Rd, Centralia 98531

Mailing: PO Box 839, Centralia

800.562.6926 (intake daytime)

800.562.5624 (after hours)

360.807.7080 (office)

360.330.7536 (fax)

ECEAP, Centralia College

217 S. Iron St, Centralia 98531

www.centralia.edu

360.736.9391 x460

360.330.7502 (fax)

Government funded and income-based preschool.

Elks Therapy Program for Children

PO Box 110760, Tacoma 98411

253.472.6223

253.472.6217 (fax)

800.825.3557 (toll free)

Occupational therapy for children under 21.

Foster Parent Association, Lewis County

3506 Rodcin Ave, Centralia 98531

360.520.6683

Growing Together

415 S Rock St, Centralia 98531

360.736.5906

360.330.2222 (fax)

Guardian Ad-Litem (GAL), Lewis County

Lewis County Juvenile Court

1255 SW Pacific Ave, Chehalis

Mailing: 360 NW North St MSJUV01, Chehalis 98532

360.740.1178 x8

360.740.2601 (fax)

HeadStart, Lewis County

1703 N Pearl St, Centralia 98531

www.lewiscountyheadstart.org

360.736.1696

360.736.0090 (fax)

Local sites: Centralia, Randle, Salkum and Toledo.

Healthy Kids Now

www.parenthelp123.org

877.KIDSNOW

In-Tot Infant-Toddler Developmental Center

179 Dieckman Rd, Adna

PO Box 249, Adna 98522

www.reliableenterprises.org (web)

intot@reliableenterprises.org (email)

360.748.4359

360.740.1663 (fax)

888.548.4359 (toll free)

Children 0-3 years with developmental delays.

Interagency Coordinating Council, Lewis County

intot@reliableenterprises.org

360.748.4359

888.548.4359 (toll free)

Washington Sensory Disabilities Services (WSDS)

Puget Sound ESD

800 Oakesdale Ave SW, Renton 98057

www.wsdsonline.org

425.917.7827 (voice/TTY)

800.572.7000 (voice/TTY)

425.917.7838 (fax)

Provide help for deaf or blind children 0-21 years of age. Teachers or parents may call for help with the individual.

CHILDREN'S SERVICES*(continued)***Women Infants Children (WIC)**

Lewis County Health Dept, 2nd floor
360 NW North St, Chehalis 98532
360.740.1255
360.740.2708 (fax)
360.740.2709 (en español)

*Winlock, Mossyrock, Morton and Randle.
Assist parents with nutritional facts. Also
helps with food and baby formula.*

**CLOTHING BANKS****Centralia Seventh Day Adventist Church**

1607 Military Rd, Centralia 98531
360.736.4262
Wed 11am-2pm

Destiny Christian Center

413 N Tower Ave, Centralia 98531
www.lifeatdestiny.com
360.736.6443
Mon 10:30am-12:30pm
Last Sat 9-11:00am

Dress for Success--Women's Professional Clothing

Sewsies Bridal Salon
470 N Market Blvd, Chehalis 98532
360.740.6304
2nd Sat 10am-2pm

Foster Children Clothing Bank

360.864.2176 (emergency situations)

Gather Church

104 S Rock St, Centralia 98531
Mailing: PO Box 223, Rochester 98579
www.gatherchurch.com
360.827.0264
Th 5-6:30pm Sat 3-4pm

COMMUNITY SUPPORT**211 Get Connected, Get Answers**

www.211wa.org (web)
211@upc.org (email)
211 or 877.211.9274

American Red Cross

1817 S Market Blvd #F, Chehalis 98532
www.rainier-redcross.org
360.748.4607
360.748.3991 (fax)

Animal Shelter

560 Centralia Alpha Rd, Centralia 98531
shelterpets@localaccess.com
360.740.1290
360.740.1273 (fax)

Community Action Council (CAC)

409 N Tower Ave, Centralia 98531
www.caclmt.org
360.736.1800
360.736.1891
Helps with electricity payments.

Destiny Christian Center

416 N Tower Ave, Centralia 98531
www.lifeatdestiny.com
360.736.6443

Love, INC (In the Name of Christ)

PO Box 152, Chehalis 98532
360.748.8611
360.748.8621 (fax)
Donated furniture, gas vouchers, utility assistance, diapers, rides.

Parent Support Services, Centralia College

600 W. Centralia College Blvd, Centralia 98531
360.736.9391 x465
360.330.7502 (fax)

Rochester Organization of Families (ROOF)

10140 Hwy 12 SW, Rochester
Mailing: PO Box 312, Rochester 98579
www.roofcommunityservices.org (web)
360.273.6375
360.273.1009 (fax)

Helps with energy costs and rent, food bank, after school program.

Salvation Army, Centralia Corps

303 N Gold St, Centralia
Mailing: PO Box 488, Centralia 98531
catherinewarner@ussalvationarmy.org (email)
360.736.4339
360.330.0376 (fax)

Social Services, Lewis County

Chemical Dependency Treatment
360.740.1418
Developmental Disabilities
360.740.1284
DUI and Traffic Safety
360.740.1450
Homeless/Housing
360.740.1434
Community Mobilization
360.740.1424
Mental Health Liaison
360.740.1430

United Way of Lewis County

450 NW Pacific Ave, Chehalis 98532
www.lewiscountyuw.com (web)
directorlewiscountyuw.com
360.748.8100
360.748.8222 (fax)

Universal Interpreter Services

888.462.0500



COMMUNITY SUPPORT

(continued)

Volunteer Center of Lewis, Mason, Thurston Counties
317 4th Ave E, 3rd Fl, Olympia 98501
360.741.2622
360.915.6019 (fax)

WA National Guard Family Program Assistance Center
309 S Byrd, Centralia 98531
360.628.7195

White Pass Community Service Center

123 Main St, Morton
Mailing: PO Box 789, Morton 98356
360.496.5404
360.496.5406 (fax)

Mountain Transit bus service and housing and utilities assistance.

DENTAL PROGRAMS

ABCD Program

Access to Baby and Child Dentistry
Pope's Kids Place
711 Harrison Ave, Centralia 98531
www.popeskidsplace.org (web)
info@popeskidsplace.org (email)
360.736.5405
360.736.5620 (fax)

DECODE—University of WA Mobile Dental Clinic

Clinic: 203 W Reynolds, Centralia 98531
360.736.9558
360.736.1436 (fax)
206.543.4619 (UW Dental Clinic)
For developmentally disabled clients only



Olympic Dental & Denture Center

716 W Main St, Centralia 98531
360.736.0795

Sea Mar Dental

409 Custer Way SE, Tumwater 98501
360.570.8016
360.570.8275 (fax)

Valley View Dental

2690 NE Kresky Ave, Chehalis 98532
360.330.9595
102A Westlake Ave, Morton
360.496.5101

Nonprofit community health center that offers dental health care for children and adults, bilingual staff, sliding fee scale depending on income

DEVELOPMENTAL

DISABILITIES

Adult Protective Services (APS)

1651 S Market Blvd, Chehalis 98532
www.aasa.dsha.wa.gov/aps
877.734.6277
360.664.7603 (fax)
800.672.7091 (TTY)

APS protects vulnerable adults by investigating allegations of abuse, neglect, abandonment, and financial exploitation when the person lives in their own home.

The ARC of Washington State

2638 State Ave, Olympia 98506
www.arcwa.org (web)
info@arcwa.org (email)
360.357.5596
360.357.3279 (fax)
888.754.8798 (toll free)
800.562.6000 (legislative hotline)

Advocates for the rights of citizens

Autism Outreach Project

www.esd189.org/autism
888.704.9633 (toll free)

Autism Society of Washington

info@autismsocietyofwa.org
888.279.4968 (toll free)

Brain Injury Association of Washington

helpline@braininjurywa.org
877.824.1766

CHADD Northwest Chapter

seattle@chadd.net
206.622.2127

Developmental Disabilities Council

eva.rooks@ddc.wa.gov
800.634.4473

Developmental Disabilities Program, Lewis County

184 NW Chehalis Ave, Chehalis 98532
360.740.1284

Disability Rights Washington (DRW)

315 Fifth Ave S #850, Seattle 98104
www.disabilityrightswa.org

206.324.1521 (local)
800.562.2702 (toll free)
800.905.0209 (TTY)

We provide free advocacy services to people with disabilities:

- Disability rights information and referrals
- Problem solving strategies for disability issues
- Community education and training;
- Legal services for disability discrimination or violation of rights

Division of Developmental Disabilities (DDD), DSHS

1000 Kresky Ave #R, Centralia 98531
www.dshs.wa.gov/ddd
800.357.5824 (toll free, ask for Lewis County)
800.339.8227 (application)
360.807.6240 (fax)
360.807.7003 (Jerry Mullin)
360.725.4279 (Jennifer Strozyk)
360.807.7011 (Paulette Kotter)
360.807.7013 (Sandra Schmaltz)

Division of Vocational Rehabilitation (DVR)

1000 Kresky Rd #R, Centralia 98531
www.dshs.wa.gov/dvr
360.807.7000 (receptionist)
360.07.6240 (fax)
800.830.2791 (toll free)

Down Syndrome of Puget Sound

contact@downsyndromecommunity.org
206.427.2496

DEVELOPMENTAL DISABILITIES

(continued)

Early Support for Infants & Toddlers

communications@wa.del.gov
360.725.3500

Easter Seals of WA

www.easterseals.com
800.678.5708 (toll free)

Epilepsy Foundation Northwest

www.epilepsyfoundation.org/local/northwest
800.752.3509 (toll free)

Family-to-Family Health Information Center

jfinholm@wapave.org
800.572.7368

FAS Family Resource Institute

800.999.3429

Families for Effective Treatment of Autism (FEAT)

featwa@featwa.org
206.763.3373

In-Tot Infant-Toddler Developmental Center

179 Dieckman Rd, Adna
PO Box 249, Adna 98522
www.reliableenterprises.org
intot@reliableenterprises.org
360.748.4359
360.740.1663 (fax)
888.548.4359 (toll free)

Lewis County Work Opportunities (LCWO)

122 Sears Rd, Chehalis 98532
www.lcworkop.org (web)
info@lcworkop.org (email)
360.748.9921
360.748.9922 (fax)

Morningside Services

601 W Main St #4, Centralia 98531
www.morningsideservices.com
360.807.2100
360.807.2111 (fax)

People First of Washington

Mailing: PO Box 648, Clarkston, WA 99403
509.758.1129 (state office)
509.758.1289 (fax)
360.880.0672 (local chapter)
800.758.1129 (toll free)

Parent to Parent / Family Support Network

Reliable Enterprises
203 W Reynolds Ave, Centralia
Mailing: PO Box 870, Centralia 98531
www.reliableenterprises.org (web)
360.736.9558 x107
360.736.1436 (fax)



Parents are Vital in Education (PAVE) of WA

6316 S 12th St, Tacoma 98465
www.wapave.org
pave@wapave.org (email)
253.565.2266 (voice/TTY)
253.566.8052 (fax)
800.572.7368 (toll free)
• Family to Family Information Center
• Parent Training & Information Center
• Response to Intervention (RTI)
• Specialized Training of Military Parents (STOMP)

Special Olympics

Lewis County Office
360.740.1284
SW Region Sports and Training
800.752.7559 x202

Spina Bifida Association of Washington

sbaws@yahoo.com
888.289.3702

Thorbecke's Inclusive Membership Program (JUMP)

91 SW Chehalis Ave, Chehalis 98532
www.thorbeckes.com
360.748.3744

Tourettes Syndrome

tsawashingtonchapter@yahoo.com
206.621.2108

United Cerebral Palsy of South Puget Sound

info@ucp-sps.org
253.565.1463

Visions Program

415 Rock St, Centralia
Mailing: 1265 SW Pacific Ave,
Chehalis 98532
360.736.5965
360.330.2222 (fax)



DOMESTIC VIOLENCE

Domestic Violence Hotline, WA

800.562.6025

Human Response Network / Sexual Assault Program

125 NW Chehalis Ave, Chehalis
Mailing: PO Box 337, Chehalis 98532
www.hrnlc.org and info@hrnlc.org
360.748.6601 (local)
360.748.6630 (fax)
800.244.7414 (toll free)
360.748.6630 (Español)

Crime victims advocacy network. Operates SafeHaven emergency shelter.

EDUCATION

Centralia Christian School
1315 S Tower Ave, Centralia 98531
360.736.7657

Centralia College
600 Centralia College Blvd, Centralia
98531
www.centralia.edu
360.736.9391

Centralia College East
701 Airport Way, Morton 98356
360.496.5022

**Chehalis-Centralia Student
Support Cooperative**
1265 SW Pacific Ave, Chehalis 98532
360.807.7245
360.748.8767 (fax)

Cispus Learning Center
2142 Cispus Rd, Randle 98377
360.497.7131

**DO-IT Disabilities,
Opportunities, Internetworking,
and Technology**
www.washington.edu/doit
888.972.3648

Evergreen Academy
506 S Washington Ave, Centralia
98531
360.330.1833

**Family Literacy Program,
Centralia College**
600 Centralia College Blvd, Centralia
98531
360.736.9391 x216
360.330.7579 (fax)

Growing Together
415 Rock St, Centralia 98531
Mailing: 1265 SW Pacific Ave,
Chehalis 98532
360.736.5965
360.330.2222 (fax)

**In-Tot Infant-Toddler
Developmental Center**
179 Dieckman Rd, Adna
PO Box 249, Adna 98522
www.reliableenterprises.org (web)
intot@reliableenterprises.org (email)
360.748.4359
360.740.1663 (fax)
888.548.4359 (toll free)

**Literacy Council, Lewis
County**
PO Box 625, Centralia 98531
www.ourliteracycouncil.org
360.736.9391 x382

Public Schools (by City)
Adna Elementary School
360.748.7029
Adna Middle/High School
360.748.8552
Apollo Alternative
360.785.3537
Boistfort School
360.245.3343
Centralia Alternative Program (CAPS)
360.748.2163
Centralia Elementary Schools
Edison 360.330.7631
Fords Prairie 360.330.7633
Jefferson-Lincoln
360.330.7636
Oakview 360.330.7638
Washington 360.330.7641

Centralia Middle School
360.330.7619
Centralia High School
360.330.330.7605
Chehalis Elementary Schools
Cascade 360.807.7215
Green Hill 360.740.3520
Olympic 360.807.7225
RE Bennett 360.807.7220
(Chehalis) WF West High School
360.807.7235
Chehalis Middle School
360.807.7230
Glenoma Elementary School
360.498.5415
Mineral Grade School
360.492.5309
Morton Grade School
360.496.5143
Morton High School
360.496.5137
Mossyrock Elementary
360.983.3184
Mossyrock Junior/High School
360.983.3183
Napavine Grade School
360.262.3345
Napavine High School
360.262.3301
Onalaska Elementary
360.978.4115
Onalaska High School
360.978.4111
Packwood Grade School
360.494.4151
Pe Ell Schools
360.291.3244
Toledo Elementary
360.864.4761
Toledo Middle School
360.864.2395

Toledo High School
360.864.2391
Toledo Write Choice Alternative
360.864.6325
White Pass Elementary
360.497.7300
White Pass Junior/Senior High
360.497.5816
(Winlock) Evaline School
360.785.3460
Winlock Elementary
360.785.3516
Winlock Middle School
360.785.3046
Winlock High School
360.785.3537

**Seventh Day Adventist
School**
2104 S Scheuber Rd, Chehalis 98532
360.748.3213

**Special Education
Cooperative, Lewis County**
179 Dieckman Rd, Adna
Mailing: PO Box 35, Adna 98522
360.748.3384
360.748.8360 (fax)

Visions Program
2100 N National Ave, Chehalis 98532
Mailing: 1265 SW Pacific Ave,
Chehalis 98532
360.740.9796

**WA Virtual Academics (sites
in Centralia and Winlock)**
1584 McNeil St #200, DuPont 98327
866.548.9444 (enrollment/
program inquiries)
253.964.1143 (fax)



EMERGENCY:

All Emergencies: Dial 911

See also Fire Depts, Police Depts / Sheriff / State Patrol, Hospitals

EMPLOYMENT SERVICES

All Star Employment Services

2100 N National Ave, Chehalis 98532
360.996.4271

Division of Vocational Rehabilitation (DVR)

1000 Kresky Rd #R, Centralia 98531

www.wa.gov/dshs/dvr

800.830.2791 (toll free)

360.807.6240 (fax)

360.807.7000 (reception)

360.807.7001 (Janice Crafton)

360.807.7005 (Jim Churchill)

360.807.7006 (Faye McMoore-Ainuu)

Division of Developmental Disabilities (DDD)

1000 Kresky Ave #R, Centralia 98531

www.dshs.wa.gov/ddd

800.357.5824 (toll free, ask for Lewis County)

800.339.8227 (application)

360.807.6240 (fax)

360.807.7003 (Jerry Mullin)

360.725.4279 (Jennifer Strozyk)

360.807.7011 (Paulette Kotter)

360.807.7013 (Sandra Schmalztz)

Employers Overload

360.273.9141

Employment Security Department (ESD)

151 NE Hampe Way, Chehalis 98532

www.esd.wa.gov

360.748.2360

360.740.6888 (fax)

800.318.6022 (unemployment)

Excel Staffing

1251 Harrison Ave, Centralia 98531

360.736.7776

Express Personnel

1126 S Gold St, Centralia 98531

360.330.9050

Labor Ready

418 N Tower Ave, Centralia 98531

360.807.8930 (office)

800.245.2267 (toll free)

Lewis County Work Opportunities (LCWO)

122 Sears Rd, Chehalis 98532

www.lcworkop.org

360.748.9921 (office)

360.748.9922 (fax)

Morningside Services

1817 S Market Blvd #2, Chehalis 98532

www.morningsideservices.com

360.740.9700 (office)

360.740.9794 (fax)

Reliable Employment Services

203 W Reynolds Ave, Centralia 98531

Mailing: PO Box 870, Centralia 98531

www.reliableenterprises.org

360.736.9558 x109 (office)

360.736.1436 (fax)

Remedy Intelligent Staffing

107 E Maple St, Centralia 98531

360.330.5550

Temp agency.

Total Employment & Management

1791 NE Kresky Ave, Chehalis 98532

360.740.8832

WorkSource Lewis County

151 NE Hampe Way, Chehalis 98532

www.go2worksource.com

www.go2ui.com (claim center)

360.748.2360

360.740.6888 (fax)

800.318.6022 (Unemployment Telecenter)

FAMILY SUPPORT SERVICES

Adolescent Health Transition Project

www.depts.washington.edu/healthtr

206.685.1358

Autism Outreach Project

www.esd189.org/autism

888.704.9633 (toll free)

Autism Society of WA

www.autismsocietyofwa.org

888.279.4968 (toll free)

Centralia College, Parent Support Services

600 W Centralia College Blvd,

Centralia 98531

360.736.9391 x654 or 588

360.330.7502 (fax)

Easter Seals of WA

www.easterseals.com

800.678.5708 (toll free)

Epilepsy Foundation Northwest

www.epilepsyfoundation.org/local/northwest

northwest

800.752.3509 (toll free)

Family Faces

www.familyfaces.org

866.987.3159

Information and support for craniofacial disorders.

Family Reconciliation Services

3401 Galvin Rd, Centralia 98531

360.807.7080

888.822.3541 (toll free)

Family Voices

Family-to-family health information

www.familyvoicesofwashington.com

800.572.7368 (toll free)

Fathers Network of WA

www.fathersnetwork.org

425.747.4004 x4286

Learning Disabilities Association of Washington

www.ldawa.org

425.882.0820

Life Opportunities Trust

www.arcwa.org/endowment_trust.htm

888.754.8798 x103

Make-a-Wish of Washington

www.makeawishwa.org

800.304.WISH (toll free)

206.623.5300

FAMILY SUPPORT SERVICES

(continued)

National Information Center for Children and Youth with Disabilities (NICHCY)

www.nichcy.org
800.695.0295 (toll free)

National Organization for Rare Disorders (NORD)

www.rarediseases.org
800.999.6673 (toll free)
203.797.9590

Parent to Parent / Family Support Network

203 W Reynolds Ave, Centralia 98531
Mailing: PO Box 870, Centralia 98531
www.reliableenterprises.org
pzamudio@reliableenterprises.org
anaillon@reliableenterprises.org
360.736.9558 x107
360.880.0672 (cell)
360.736.1436 (fax)

Parents are Vital in Education (PAVE) of WA

6316 S 12th St, Tacoma 98465
www.wapave.org (web)
pave@wapave.org (email)
253.565.2266 (voice/TTY)
253.566.8052 (fax)
800.572.7368 (toll free)

- Family to Family Information Center
- Parent Training & Information Center
- Response to Intervention (RTI)
- Specialized Training of Military Parents (STOMP)

Sibling Support Project

www.siblingsupport.org
206.987.3285

Specialized Training of Military Parents (STOMP)

www.stompproject.org
800.572.7368 (toll free)

Twin City Mission for Women

www.twincitiesmission.com
360.330.2130
Homeless women and their children.

WA State Medical Home Leadership Network

www.medicalhome.org
206.685.1279

WithinReach (Healthy Mothers, Healthy Babies)

info@withinreachwa.org
800.322.2588 (toll free)

FIRE DEPTS

All Emergencies: Dial 911

Ashford Fire Dept

360.569.2752
(non-emergency)

Bucoda Fire Dept

360.278.3525 (non-emergency)

Centralia-Riverside Fire Dept

360.736.7681 (non-emergency)

Chehalis Fire Dept

360.748.3394 (non-emergency)



Curtis Fire Dept

360.736.2952 (non-emergency)

Doty Fire Dept

360.291.8810 (non-emergency)

Forest Fire Reports

800.562.6010

Glenoma Fire Dept

360.498.5337 (non-emergency)

Mineral Fire Dept

360.492.5942 (non-emergency)

Morton Fire Dept

360.496.5183 (non-emergency)

Napavine Fire Dept

360.262.3320 (non-emergency)

Onalaska Fire Dept

360.978.4182 (non-emergency)

Packwood Fire Dept

360.494.4123 (non-emergency)

Pe Ell Fire Dept

360.291.0080 (non-emergency)

Randle Fire Dept

360.497.7745 (non-emergency)

Salkum Fire Dept

360.985.2111 (non-emergency)

Toledo Fire Dept

360.864.2366 (non-emergency)

Vader Fire Dept

360.295.3188 (non-emergency)

Winlock Fire Dept

360.785.4221 (non-emergency)



FOOD PROGRAMS

Chehalis Community Services

151 NE Hampe Way, Chehalis 98532
360.740.3800
877.980.9180 (toll free)

CHOICE Regional Health Network Basic Food Program

800.981.2123

Destiny Christian Center

416 N Tower Ave, Centralia 98531
www.lifeatdestiny.com
360.736.6443
Mon 10-12:30pm (hot meals)
Last Sat 9-10:30am (groceries)

Food Bank Coalition, Lewis County

360.330.1519 (main office)

- Centralia 360.736.4339
- Chehalis 360.748.1226
- Somma (Salkum, Onalaska, Mossyrock) 360.985.2422
- Toledo 360.864.4847
- White Pass 360.497.0583
- Winlock 360.785.4377

FOOD PROGRAMS

(continued)

Gather Church

104 S Rock St, Centralia 98531
Mailing: PO Box 223, Rochester 98579
www.gatherchurch.com
360.827.0264
Th 5-6pm Sat 3-4pm

Rochester Organization of Families (ROOF)

10140 Hwy 12 SW, Rochester
Mailing: PO Box 312, Rochester 98579
www.roofcommunityservices.org (web)
360.273.6375
360.273.1009 (fax)
Mon Tue Thu 9:30-12 & 4-5
Fri 9:30-12

Helps with energy costs and rent, food bank, after school program.

Salvation Army Centralia Corps

303 N Gold St, Centralia 98531
Mailing: PO Box 488, Centralia 98531
catherinewarner@uswsalvationarmy.org
360.736.4339
360.330.0376 (fax)

Helps with rent, utilities, food.



GOVERNMENT AGENCIES

Adult Family Home, WA

360.725.2500
360.664.7575 (placement/
referral)
800.562.6078 (complaints)

Adult Protective Services (APS), DSHS

1651 S Market Blvd, Chehalis 98532
www.aasa.dsha.wa.gov/aps
877.734.6277
360.664.7603 (fax)
800.672.7091 (TTY)

APS protects vulnerable adults by investigating allegations of abuse, neglect, abandonment, and financial exploitation when the person lives in their own home.

Animal Shelter

560 Centralia Alpha Rd, Centralia 98531
shelterpets@localaccess.com
360.740.1290

Area Agency on Aging (AAA), DSHS

1651 S Market Blvd, Chehalis 98532
360.748.2288
Information and referral service for adults age 60+ to plan and find long-term care.

Attorney General, WA

1125 Washington St SE, Olympia
360.753.6200
800.753.6200 (consumer protection)

Auditor, Lewis County

351 NW North St, Chehalis 98532
360.740.1162 (vehicle
licensing)
360.740.1165 (marriage
licensing)

Chehalis Community Services

151 NE Hampe Way, Chehalis 98532
877.980.9180 (toll free)

Community Development, Lewis County

2025 NE Kresky Ave, Chehalis 98532
360.740.1146
360.740.1245 (fax)

Courthouse, Lewis County

351 NW North St, Chehalis 98532
360.748.9121
360.740.1203 (District Court)
360.748.9241 (Jail)
360.740.1210 (Probation)
360.740.1240 (Prosecutor)
360.740.1333 (Superior Court)

Deaf Services

800.422.7930

Dept for the Blind, WA

3411 S Alaska St, Seattle 98118
www.dsb.wa.gov
206.906.5500
800.552.7103 (toll free)

Dept of Corrections, WA

125 NW Chehalis Ave, Chehalis 98532
360.748.1285

Dept of Licensing, WA

2426 W Reynolds Ave, Centralia 98531
360.807.6200

Developmental Disabilities Program, Lewis County

184 NW Chehalis Ave, Chehalis 98532
360.740.1284

Division of Child Support Enforcement (DCS), WA

6135 Martin Way E, Lacey 98516
Mailing: PO Box 11520, Tacoma 98411
360.664.6900 (local)
800.345.9964 (toll free)
866.668.438.0518 (fax)
360.438.8520 (TDD)

Division of Children and Family Services (DCS), WA

3401 Galvin Rd, Centralia 98531
Mailing: PO Box 839, Centralia
800.562.6926 (intake daytime)
800.562.5624 (intake after
hours)
360.807.7080 (office)
360.330.7536 (fax)

Division of Developmental Disabilities (DDD), DSHS

1000 Kresky Ave #R, Centralia 98531
www.dshs.wa.gov/ddd
800.357.5824 (toll free, ask for
Lewis County)
800.339.8227 (application)
360.807.6240 (fax)
360.807.7003 (Jerry Mullin)
360.725.4279 (Jennifer
Strozyk)
360.807.7011 (Paulette Kotter)
360.807.7013 (Sandra
Schmaltz)

GOVERNMENT AGENCIES*(continued)***Division of Employment Security Department (ESD), WA**

151 NE Hampe Way, Chehalis 98532
 www.esd.wa.gov
 360.748.2360
 360.740.6888 (fax)
 800.318.6022 (unemployment)

Division of Vocational Rehabilitation (DVR), DSHS

1000 Kresky Rd #R, Centralia 98531
 www.wa.gov/dshs/dvr
 800.830.2791 (toll free)
 360.807.6240 (fax)
 360.807.7000 (reception)
 360.807.7001 (Janice Crafton)
 360.807.7005 (Jim Churchill)
 360.807.7006 (Faye McMoore-Ainuu)

Emergency Management, WA

800.258.5990 (24 hour)

Family & Children's Ombudsman, WA

800.571.7321

Family Caregiver Support Program, WA

360.664.3162 x106
 866.714.0479 (toll free)

Resources and support for unpaid caregivers.

Foster Parent Association, Lewis County

910 Goff St, Centralia 98531
 360.520.6683

Guardian Ad-Litem (GAL), Lewis County

Lewis County Juvenile Court
 1255 SW Pacific Ave, Chehalis
 Mailing: 360 NW North St MSJUV01,
 Chehalis 98532
 360.740.1178 x8
 360.740.2601 (fax)

HeadStart, Lewis County

1703 N Pearl St, Centralia 98531
 www.lewiscountyheadstart.org
 360.736.1696
 360.736.0090 (fax)
Centralia, Randle, Salkum and Toledo

Health Dept, Lewis County

360 NW North St, Chehalis 98532
 360.740.1223 (info)
 800.562.6130 x1223 (toll free)
 360.740.1472 (fax)
 360.740.1368 (HIV / AIDS)
 360.740.1275 (communicable diseases)
 360.740.1364 (food handlers)

Home and Community Services (COPES), WA State

3451 Galvin Rd, Centralia 98531
 360.807.7150
 360.330.7517 (fax)
 800.487.0360 (toll free)

Help for adults who may need Medicaid to help pay for care.

Interagency Coordinating Council, Lewis County

intot@reliableenterprises.org
 360.748.4359
 888.548.4359 (toll free)

Juvenile Court, Lewis County

1255 SW Pacific Ave, Chehalis 98532
 Mailing: 360 NW North St, MSJUV01
 360.740.1178

Juvenile Rehabilitation, DSHS

3859 Marin Way E #102, Olympia
 360.486.2230

Echo Glen Children's Center
 33010 SE 99th, Snoqualmie
 425.831.2500

Green Hill Training School
 375 SW 11th St, Chehalis 98532
 360.748.0131

Maple Lane School
 20311 Old Hwy 9 SW, Centralia 98531
 360.736.1361

Labor & Industries (L&I), WA

7273 Linderson Way SW, Tumwater
 360.902.5800
 360.902.5320
 (apprenticeships)
 360.902.5355 (crime victims compensation)

**Long-Term Care Ombudsman Washington**

3321 Cooks Hill Rd, Centralia 98531
 www.ltcop.org
 360.943.6018
 360.736.1997 (fax)
Advocates for people living in care facilities.

Medical Assistance Administration, Washington

fortress.wa.gov/dshs/maa
 800.562.3022 (toll free)
Client-provider information

Parks Dept, Lewis County

360.740.1135

Parks & Recreation Commission, Washington

360.902.8844
 Ike Kinswa State Park, Silver Creek
 360.983.3402
 Lewis & Clark State Park, Toledo
 360.864.2643
 Rainbow Falls State Park, Pe Ell
 360.291.3767

Retirement Systems, Washington

6835 Capitol Blvd, Tumwater
 360.664.7000
 800.547.6657 (toll free)
 360.586.5450 (TTY)
 866.377.8895 (TTY toll free)

Social Security Administration

1821 Cooks Hill Rd #100, Centralia 98531
 www.ssa.gov
 360.330.2866
 360.330.2837 (fax)
 800.772.1213 (toll free)

GOVERNMENT AGENCIES*(continued)***Social Services, Lewis County**

Chemical Dependency Treatment
360.740.1418

Developmental Disabilities
360.740.1284

DUI and Traffic Safety
360.740.1450

Homeless/Housing
360.740.1434

Community Mobilization
360.740.1424

Mental Health Liaison
360.740.1430

Solid Waste, Lewis County

800.749.5980 (hotline)
360.740.1481 (Chehalis
transfer station)
360.496.5095 (East County
transfer station)

WA Sensory Disabilities Services (WSDS)

Puget Sound ESD
800 Oakesdale Ave SW, Renton 98057
www.wsdsonline.org
425.917.7827 (voice/TTY)
800.572.7000 (voice/TTY)
425.917.7838 (fax)

WorkSource, Lewis County

151 NE Hampe Way, Chehalis 98532
www.go2worksource.com
www.go2ui.com (claim center)
360.748.2360
360.740.6888 (fax)
800.318.6022 (unemployment
Telecenter)

HOUSING & HOMELESS**Community Action Council (CAC)**

409 N Tower Ave, Centralia 98531
www.caclmt.org
360.736.1800
360.736.1891 (fax)
Provides assistance for energy and housing

Habitat for Humanity

360.736.7158

Homeless School Liaison

nkirby@centralia.wednet.edu
360.330.7631
360.330.7604 (fax)

Human Response Network

360.748.6601

Love, INC (In the Name of Christ)

PO Box 152, Chehalis 98532
360.748.8611
360.748.8621 (fax)
Donated furniture, gas vouchers, utility assistance, diapers, rides

Office of Fair Housing

800.877.0246

Reliable Enterprises / Homeless Services

201 W Reynolds Ave, Centralia 98531
Mailing: PO Box 870, Centralia 98531
360.736.0679 (office)
360.520.1269 (cell)
360.736.1436 (fax)
Services provided include: case management, employment for homeless and at-risk people, rental assistance

SAFE Family Ministries

Mailing: PO Box 935, Chehalis 98532
safefamilyministries.com
360.740.9150
Transitional housing and lifestyle training for women and children. Addiction counseling, vocational training, financial and personal management education.

SafeHaven Emergency Shelter

Human Response Network / Sexual Assault Program
125 NW Chehalis Ave, Chehalis
Mailing: PO Box 337, Chehalis 98532
www.hrnlc.org and info@hrnlc.org
360.748.6601 (local)
360.748.6630 (fax)
800.244.7414 (toll free)
360.748.6630 (Español)
Crime victims advocacy network. Operates SafeHaven emergency shelter.

Salvation Army Centralia Corps

303 N Gold St, Centralia 98531
Mailing: PO Box 488, Centralia 98531
catherinewarner@uswsalvationarmy.org
360.736.4339
360.330.0376 (fax)
Help toward rent, food bank, holiday food baskets

Shelter Program, Lewis County

713 N Tower Ave, Centralia 98531
Mailing: PO Box 131, Centralia 98531
360.736.5140
360.736.7169 (fax)

Social Services, Lewis County

Homeless housing
360.740.1434

St. Vincent DePaul

139 Spencer Rd, Toledo
360.864.4130
\$100 towards rent

Twin City Mission for Women

www.twincitiesmission.com
360.330.2130
Homeless women and their children.

Veterans Aid

360.740.1429
Assist with rent, food, utilities

White Pass Community Service Center

123 Main St, Morton 98356
Mailing: PO Box 789, Morton 98356
360.496.5404
360.496.5406 (fax)





HOSPITALS

Capital Medical Center

3900 Capital Mall Dr SW, Olympia
98502

www.capitalmedical.com

888.677.9757 (toll free)
360.754.5858

Harborview Medical Center

325 Ninth Ave, Seattle 98104

www.harborview.org

206.731.3000

Mary Bridge Children's Hospital & Health Center

317 Martin Luther King Jr Way,
Tacoma 98405

www.marybridge.org

866.636.8584 (toll free)
253.403.1400

Morton General Hospital

521 Adams, Morton 98356

360.496.5112

Providence Centralia Hospital

914 S Scheuber Rd, Centralia 98531

www.providence.org/swsa

877.736.2803 (toll free)
360.736.2803

Providence Saint Peter's Hospital

413 Lilly Rd NE, Olympia 98506

www.providence.org/swsa

888.492.3480 (toll free)
360.491.9480

Seattle Children's Hospital

4800 Sand Point Way NE, Seattle
98105

www.seattlechildrens.org

866.987.2000 (toll free)
206.987.2000
206.987.2280 (TTY)

Tacoma General Hospital

315 Martin Luther King Jr Way,
Tacoma 98405

www.tacomageneral.org

253.403.1000

HOTLINES

Alcohol and Drug Abuse Hotline

800.562.1240 (24 hour)

Domestic Violence Hotline

800.562.6025

Hazardous Substance Hotline

800.633.7585

HIV / AIDS Hotline

800.272.2437

Lewis County Shelter Hotline

360.736.5140

Marijuana Hotline

800.388.4769

Medical Assistance Recipients

800.562.3022

Mental Health Hotline

800.559.6696

Medicare Hotline

800.633.4227

Missing Children Clearinghouse

800.543.5678

Poison Hotline

800.222.1222

Rape Crisis Hotline

888.269.9104

Runaway Hotline

800.448.4663

Suicide Hotline

800.559.6696

Teen Help Hotline

800.400.0900

Youth Crisis Hotline

877.345.8336

LEGAL SERVICES

Community Mediation Center of Lewis County

drclc@localaccess.com

360.748.0492
360.748.9895 (fax)

Disability Rights WA (DRW)

315 Fifth Ave S #850, Seattle 98104

www.disabilityrightswa.org

206.324.1521 (local)
800.562.2702 (toll free)
800.905.0209 (TTY)

Equal Justice Coalition

888.201.1014

Legal Foundation of WA

1325 4th Ave #1335, Seattle

206.624.2536
206.382.3396 (fax)

Lewis County Bar Legal Aid

139 NW Chehalis Ave, Chehalis 98532

lclegalaid@localaccess.com

360.748.0430
360.748.7715 (fax)

Lewis County Courthouse

351 NW North St, Chehalis 98532

360.748.9121

360.740.1203 (District Court)
360.748.9241 (Jail)
360.740.1210 (Probation)
360.740.1240 (Prosecutor)
360.740.1333 (Superior Court)

Lewis County Juvenile Court

1255 SW Pacific Ave, Chehalis 98532

Mailing: 360 NW North St, MSJUV01

360.740.1178



LEGAL SERVICES*(continued)***NW Justice Project**

401 Second Ave S #407, Seattle
 www.nwjustice.org
 888.201.2012 (toll free)
 206.464.1519
 206.387.7111 (over 60)
 206.624.7501 (fax)

LIBRARIES**Centralia Timberland Library**

110 S. Silver St, Centralia 98531
 360.736.0183

Chehalis Timberland Library

400 N Market Blvd, Chehalis 98532
 360.748.3301

Packwood Timberland Library

109 W Main St, Packwood
 360.494.5111

Randle Timberland Library

210 Silverbrook Rd, Randle
 360.497.2665

Salkum Timberland Library

2480 US Hwy 12, Salkum
 360.985.2148

Winlock Timberland Library

322 NE First St, Winlock
 360.785.3461

**MEDICAL SERVICES****Assured Home Health and Hospice**

1821 Cooks Hill Rd #200, Centralia 98531
 800.833.9404 (toll free)
 360.330.2640 (local)
 360.807.0859 (fax)

Bryam Health Care

15110 NE 95th St #101, Redmond 98052
 www.bryamhealthcare.com
 877.902.9726 (toll free)
 866.811.4500 (fax)

*Medical supplies***CHOICE Regional Health Network**

2409 Pacific Ave SE, Olympia 98504
 www.crhn.org
 360.493.4550
 800.981.2123 (toll free)
 888.493.8397 (Español)

Eye Glasses

360.748.3756 (Lions Club, children only)
 360.807.8868 (Elks Club)

Hall's Medical Center Pharmacy

505 S Tower Ave, Centralia 98531
 www.hallsmedicalcenter.com
 360.736.3301 (local)
 888.838.0703 (toll free)
 360.736.9433 (fax)

1200 Kresky Ave, Centralia (equipment)

360.736.7344 (local)
 866.736.7344 (toll free)

Health Dept, Lewis County

360 NW North St, Chehalis 98532
 360.740.1223
 800.562.6130 x1223 (toll free)
 360.740.1472 (fax)

Healthy Kids Now

www.parenthelp123.org
 877.543.7669 (toll free)

HIV / AIDS, Lewis County

351 NW North St, Chehalis 98532
 360.740.1368

Medical Assistance Administration

fortress.wa.gov/dshs/maa
 800.562.3022 (toll free)
Client-provider information

Pe Ell Health Clinic

402 N Main St, Pe Ell 98572
 360.291.3232

Providence Hospital Physical Therapy, Occupational Therapy, Speech, and Language

914 Scheuber Rd, Centralia 98531
 360.330.8720
 360.330.8787 (fax)

Providence Sound Home Care Maternity Support

360.493.5916 (receptionist)
 360.493.4724 (local)
 800.869.7062 (toll free)

Randle Clinic

108 Kindle Rd, Randle 98377
 360.497.3333

Shield Healthcare

615 Strander Blvd, Tukwila 98188
 www.shieldhealthcare.com
 800.720.7440 (toll free)
 206.575.6765 (fax)

*Medical supplies***Steck Medical Group**

1299 Bishop Rd, Chehalis 98532
 360.748.0211

Valley View Medical Center

2690 NE Kresky Ave, Chehalis 98532
 www.vvhc.org
 360.330.9595
 360.330.9530 (fax)

1810 Hwy 508, Onalaska 98570
 360.978.6600

401 Cowlitz, Toledo 98591
 360.864.4400

615 Cemetery Rd, Winlock 98596
 360.785.9400

Nonprofit community health center that offers health care for children and adults, bilingual staff, sliding fee scale depending on income.

1800 Cooks Hill Rd #F, Centralia 98531

Walk-in clinic open 12 noon-10pm, 7 days a week; closed holidays.

Vision USA

800.766.4466

WA Apple Health for Kids

hrsa.dsha.wa.gov/applehealth
 877.543.7669 (toll free)
 877.543.7669 (Español, marque dos)

MEDICAL SERVICES

(continued)

WA Basic Health Plan

www.basicehealth.hca.wa.gov
800.826.2444 (program/
applicant information)
800.660.9840 (member
customer)

Women Infants Children (WIC)

360 NW North St, Chehalis 98532
360.740.1255
360.740.2708 (fax)
360.740.2709 (Español)

MENTAL HEALTH

Cascade Mental Health Center

Mailing: PO Box 1445, Chehalis
www.cascademh.org
135 W Main St, Chehalis 98532
(Adults)

360.748.6696 (local)
360.748.0627 (fax)

2428 Reynolds Ave, Centralia
(Children and Adolescents)

360.330.9044 (local)
800.559.6696 (toll free)

Crisis emergency services, community support services, psychiatric medical services, co-occurring disorders for people with mental illness and substance abuse issues, clubhouse supported employment, child and adolescent program, adult and geriatric program

Mental Health Crisis Hotline

800.559.6696 (toll free)

Mental Health Ombudsman

866.439.3064 (toll free)

MOVIES

Chehalis Theater

558 N Market Blvd, Chehalis 98532
360.748.6414

Coming Attractions / Midway Theater

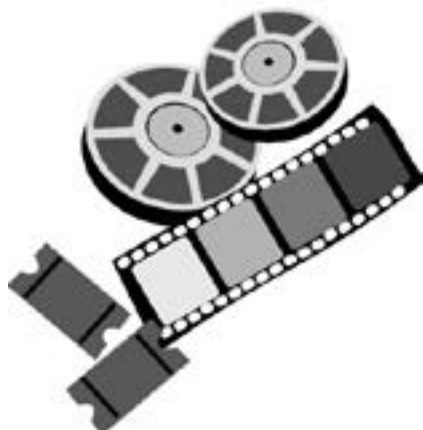
151 NE Hampe Way, Chehalis 98532
360.740.4731

McMenamin's Olympic Club Theater

112 N Tower Ave, Chehalis 98532
360.736.1634

Roxy Theater

233 W Main St, Morton
360.496.0541



PEDIATRICIANS

Chehalis Children's Clinic

370 S Market Blvd, Chehalis 98532
360.748.6693
360.748.3619 (fax)

Northwest Pediatric Center

1911 Cooks Hill Rd, Centralia
193 S Market Blvd, Chehalis
18313 Paulson St SE, Rochester
www.nwpeds.org
360.736.6778 (reception)
360.736.6552 (fax)
877.712.6800 (toll free)

Pope's Kids Place Medical Center and Respite Center

230 Washington Way, Centralia 98531
www.popeskidsplace.org
info@popeskidsplace.org
360.736.9147 (clinic)
360.736.9178 (office)
360.736.9181 (fax)
360.330.8258 (after-hours
emergency)

Providence Pediatrics After-Hours Clinic

914 Scheuber Rd, Centralia 98531
360.330.8526

*Located at the Outpatient Surgical Center
at Providence Centralia Hospital*

POLICE DEPTS/SHERIFF / STATE PATROL

All Emergencies: 911

Centralia Police Dept

118 W Maple St, Centralia 98531
360.330.7680 (non-emergency)
360.807.6210 (fax)

Chehalis Police Dept

350 N Market Blvd #201, Chehalis
98532
360.748.8606 (report crimes)
360.748.8605 (other business)

Lewis County Sheriff

360.748.9286
360.497.5500 (Randle station)

Morton Police Dept

360.496.6636 (non-emergency)

Mossyrock Police Dept

360.983.8115 (non-emergency)

Napavine Police Dept

360.262.9888 (non-emergency)

Pe Ell Marshal

360.291.2018

Toledo Police Dept

360.864.6041 (non-
emergency)

POLICE DEPTS/SHERIFF / STATE PATROL

(continued)

Vader Police Dept

360.295.3109 (non-emergency)

WA State Patrol

850 NW Louisiana, Chehalis 98532

360.748.2194 (local)

800.283.7805 (toll free)

800.283.2589 (TTY)

Winlock Police Dept

360.785.3891 (non-emergency)

PREGNANCY TESTS

Care Center

1017 W Main St, Centralia 98531

Mailing: PO Box 987, Centralia

www.carecenterlifechoices.com

360.330.2229

Free services including pregnancy tests and information about pregnancy options.

Centralia Women's Center

1000 S Scheuber Rd, Centralia 98531

360.330.8950

Laura Hamilton, Midwife

808 State Route 508, Chehalis 98532

www.hamiltonmidwife.com

360.262.9044

866.262.9044 (toll free)

360.262.3989 (fax)

360.520.4636 (cell)

Free pregnancy testing and consultation.

Planned Parenthood Federation

1020 W Main St, Centralia 98531

360.330.2899

360.330.5791 (fax)

Medicaid accepted for payment. Fees based on household income. Services include pregnancy tests, emergency contraception, birth control, HIV and STD testing, men and women's health care.



RECREATION

Centralia Parks & Recreation

118 W Maple St, Centralia 98531

360.330.7688

Chehalis Parks & Recreation

1321 S Market Blvd, Chehalis 98532

360.748.0271

360.748.6492 (Community Pool)

Lewis County Parks Dept

360.740.1135

Morton Parks Dept

710 Main Ave, Morton

360.496.6844

Parks & Recreation Commission, WA

360.902.8844

Ike Kinswa State Park, Silver Creek

360.983.3402

Lewis & Clark State Park, Toledo

360.864.2643

Rainbow Falls State Park, Pe Ell

360.291.3767

Specialized Activities & Recreation in the Community (SPARC)

203 W Reynolds Ave, Centralia 98531

Mailing: PO Box 870, Centralia

www.reliableenterprises.org

sparc@reliableenterprises.org

360.736.1436 (fax)

360.520.7310 (cell)

Special Olympics

360.740.1284 (Lewis County)

800.752.7559 x202 (SW

Region Sports & Training)

Thorbecke's Inclusive Membership Program (JUMP)

91 SW Chehalis Ave, Chehalis 98532

www.thorbeckes.com

360.748.3744



SENIOR / ADULT SERVICES

Adult Family Home Locator, Aging & Disability Services Admin (ADSA), DSHS

https://fortress.wa.gov/dshs/adsaapps/

lookup/AFHAdvLookup.aspx

Blake Office Park West

4450 10th Ave SE, Lacey 98503

360.725.2300

800.422.3263 (toll free)

877.905.0454 (TTY)

Search by county and specialties, including: dementia, mental health, and developmental disabilities.

Adult Protective Services (APS), DSHS

1651 S Market Blvd, Chehalis 98532

www.aasa.dsha.wa.gov/aps

877.734.6277

360.664.7603 (fax)

800.672.7091 (TTY)

APS protects vulnerable adults by investigating allegations of abuse, neglect, abandonment, and financial exploitation when the person lives in their own home.

Area Agency on Aging (AAA), DSHS

1651 S Market Blvd, Chehalis 98532

360.748.2288

Information and referral service for adults age 60+ to plan and find long-term care.

Catholic Community Services (CCS)

1570 Bishop Rd, Chehalis 98532

www.ccsww.org

360.345.1100

800.642.8021 (toll free)

SENIOR / ADULT SERVICES*(continued)***Family Caregiver Support Program**

360.664.3162 x106
866.714.0479 (toll free)

Resources and support for unpaid caregivers.

Help at Home

www.helpmestayhome.net
360.736.9300

Homebound Meals Programs

Twin Cities Senior Center
2545 N. National Ave, Chehalis 98532

360.748.0061 M-F

Morton Senior Center

103 Westlake Ave, Morton
360.496.3230 T/Th

Packwood Senior Center
12931 Hwy 12, Packwood
360.494.6331 T/Th

Pe Ell Nutrition Site

United Methodist Church
416 1st S, Pe Ell
360.391.3636 M/Th

Toledo Senior Center

150 Coal St, Toledo
360.864.2112 W/F

Winlock Senior Center

119 NW Kerron, Winlock
360.785.4325 W/F

Korean Women's Association

417 N Pearl St #A, Centralia 98531

www.kwaoutreach.org
360.736.4310

360.736.4319 (fax)

888.508.2728 (toll free)

Long-Term Care Ombudsman Washington

3321 Cooks Hill Rd, Centralia 98531

www.ltcop.org

360.943.6018

360.736.1997 (fax)

Advocates for people living in care facilities.

Morton Senior Center

103 Westlake Ave, Morton

360.496.3230

Packwood Senior Center

12931 Hwy 12, Packwood

360.494.6331

Pe Ell Senior Services

United Methodist Church

416 1st S, Pe Ell

360.291.3636

Retirement Systems, Washington

6835 Capitol Blvd, Tumwater

360.664.7000

800.547.6657 (toll free)

360.586.5450 (TTY)

866.377.8895 (TTY toll free)

Toledo Senior Center

150 Coal St, Toledo

360.864.2112

Winlock Senior Center

119 NW Kerron, Winlock

360.785.4325

WithinReach (Healthy Mothers, Healthy Babies)

info@withinreachwa.org

800.322.2588 (toll free)

TRANSPORTATION**Amtrak Train**

360.736.8653

800.872.7245 (toll free)

CAP Rural Public Transit

www.lowercolumbiacap.org

360.425.3430

800.383.2101 (toll free)

Dial-a-Ride

360.748.0161

Greyhound Bus

360.736.9811

800.231.2222 (toll free)

Mountain Transit

White Pass Community Service Center

123 Main St, Morton

Mailing: PO Box 789, Morton 98356

360.496.5404 or 5405

360.496.5406 (fax)

800.994.8899 (toll free)

Bus service and housing and utilities assistance.

Para Transit Services

4810 Auto Center Way, Bremerton
98312

www.paratransit.net

800.846.5438 (toll free)

800.934.5438 (TTY)

360.377.1528 (fax)

Serves Lewis, Thurston, Clallum, Grays Harbor, Kitsap, Mason, and Pierce Counties.

**Rural Transit**

253.472.7846

800.650.7846 (toll free)

Senior Transportation (CCS)

1570 N National Ave, Chehalis 98532

360.748.0161

Twin Transit

212 E. Locust St, Centralia 98531

www.watransit.com

360.330.2072

UTILITIES**Centralia City Light**

1100 N Tower St, Centralia 98531

www.cityofcentralia.com

360.330.7512

Century Link

www.centurylink.com

866.642.0444 (toll free)

888.285.0096 (Español)

(formerly Qwest)

Comcast / XFINITY

www.comcast.com

888.266.2278

Computer Connections

221 E Main St, Centralia 98531

www.thesuperhwy.com

360.736.2177

DirecTV

www.directv.com

800.783.1376 (new customers)

800.531.5000 (existing customers)

UTILITIES*(continued)***Dish Network**

www.dish.com
800.200.1308

Earthlink Telephone & Internet

www.earthlink.net
800.394.3505

Energy Northwest

Packwood
www.energy-northwest.com
360.494.5000

HughesNet Internet

www.hughes.net.com
800.919.7206

**Public Utility District (PUD),
Lewis County**

321 NW Pacific Ave, Chehalis 98532
www.lcpud.org
360.748.9261
360.496.6100 (Morton)
800.424.5555 (toll free)

Puget Sound Energy (PSE)

PO Box 97034, Bellevue 98009
www.pse.com
888.225.5773 (toll free)

Rainier Connect

1417 Kresky Ave #1, Centralia 98531
www.rainierconnect.com
360.623.3278

TDS Telecom

www.tds.net
866.571.6662 (toll free)
360.985.2111 (Salkum)
360.985.7066 (Mossyrock)

Toledo Telephone

116 Ramsey Wy, Toledo 98591
www.toledotel.com
360.864.4552

**YOUTH SERVICES****Centralia College, Teens
Entering Education Now
(TEEN), and Support for
Foster Youth**

600 Centralia College Blvd, Centralia
360.736.9391 x650 or 759

Juvenile Rehabilitation, DSHS

3859 Marin Way E #102, Olympia
360.486.2230

Echo Glen Children's Center
33010 SE 99th, Snoqualmie
425.831.2500

Green Hill Training School
375 SW 11th St, Chehalis 98532
360.748.0131

Maple Lane School
20311 Old Hwy 9 SW, Centralia 98531
360.736.1361

Operation Lookout

800.782.7335

Teen Help Hotline

800.400.0900

**True North, Student
Assistance Services, ESD 113**

601 McPhee Rd SW, Olympia 98502
360.464.6873

2100 N National Ave, Chehalis 98532

Mailing: PO Box 12, Chehalis

360.748.2274

360.748.2276 (fax)

877.259.0313 (toll free)

Addiction counseling for youth to age 18.

**Youth Programs, ESD 113,
Lewis County**

135 NW Prindle St, Chehalis 98532

Mailing: PO Box 745, Chehalis

360.748.4441

360.740.0922 (fax)

Provides job experience for youths.

LEWIS COUNTY WORK OPPORTUNITIES

Helping People



Help Themselves

122 Sears Rd, Chehalis, WA 98532
360.748.9921 (office); 360.748.9922 (fax)
www.lcworkop.org